



BAKKAFROST SCOTLAND

Our aim is to be the leading, most sustainable salmon producer in Scotland.

Our values

PROVENANCE

Committed to provenance

PASSION

Passion of our people

RESPECT

Respect for our natural environment and our communities

Our Healthy Living pillars

We prioritise absolute quality and integrity from loch to plate with sustainability at the heart. Our Healthy Living Plan sets out our commitment to sustainability across our 5 pillars.



HEALTHY BUSINESS

Responsible growth



HEALTHY SALMON

Exceeding leading standards



HEALTHY PEOPLE

Preferred employer



HEALTHY ENVIRONMENT

Committed to environmental stewardship



HEALTHY COMMUNITIES

Create shared value



Our Value Chain

We are engaged in all stages of the value chain ensuring total value chain integrity and full traceability.



BROODSTOCK



FRESHWATER



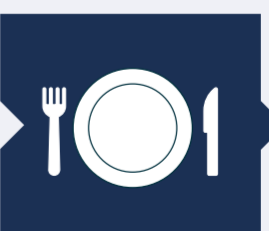
MARINE



HARVESTING



PROCESSING



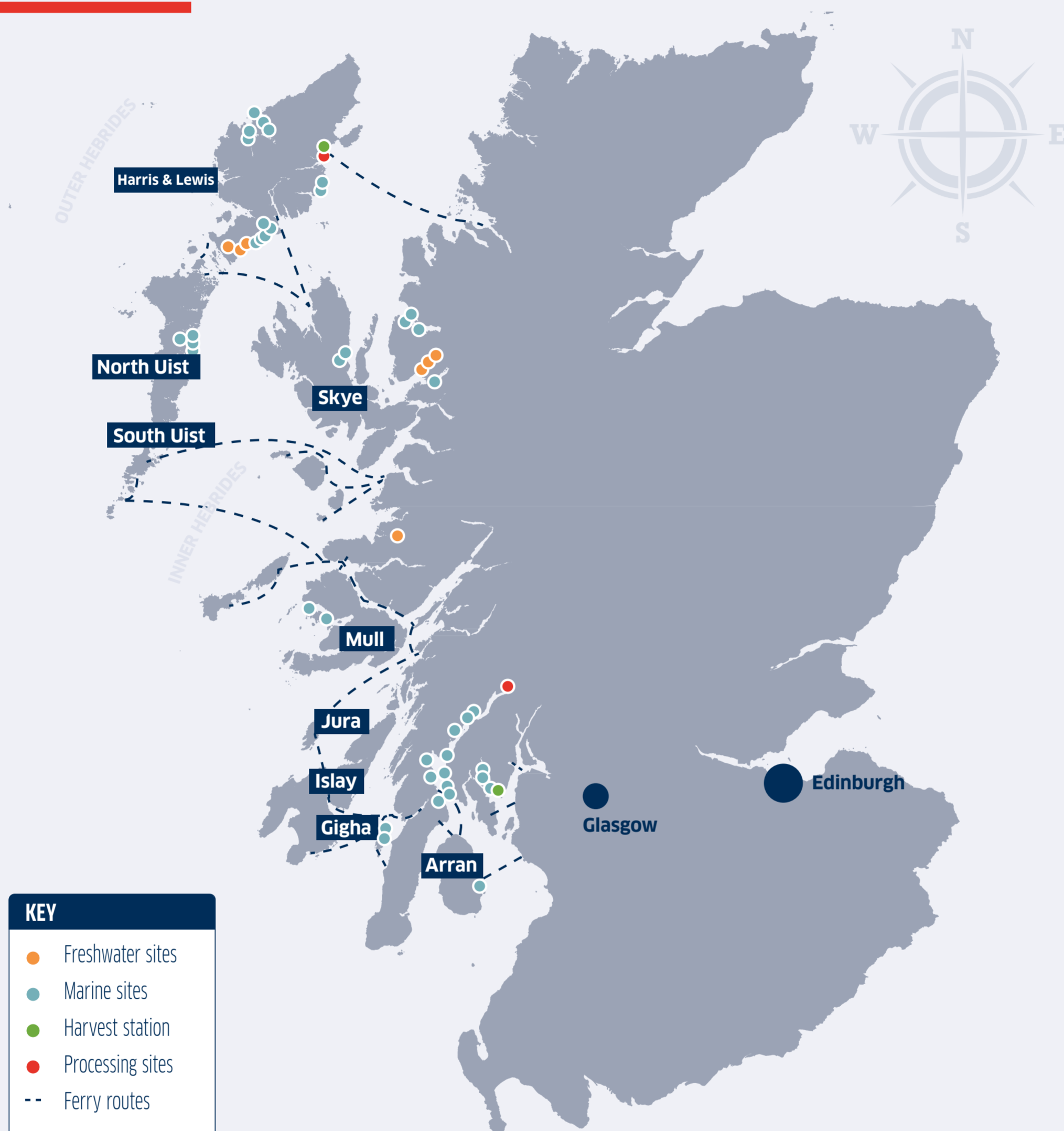
SERVED WITH PRIDE



FEED



OUR LOCATIONS



45
SITES

549
EMPLOYEES

Recent awards





HEALTH & WELFARE AND ENVIRONMENTAL STEWARDSHIP



Accreditations & certifications





NORTH GRAVIR PROPOSED DEVELOPEMENT

Project overview

The Proposed Development is located on the east coast of the Isle of Lewis. This proposal has innovation at its heart, insuring robust fish health and welfare and environmental sustainability. The Proposed Development will be located in a high energy environment and will use the latest technology to ensure minimal environmental interaction.

NORTH GRAVIR PROPOSED DEVELOPEMENT	
Total surface area	1.68 ha
Pen size	200m (circumference)
Pen Number	5
Groups	1 (1 x 5 pen layout)
Feed Barge Location	A single feed barge permanently moored to the north of the pen group

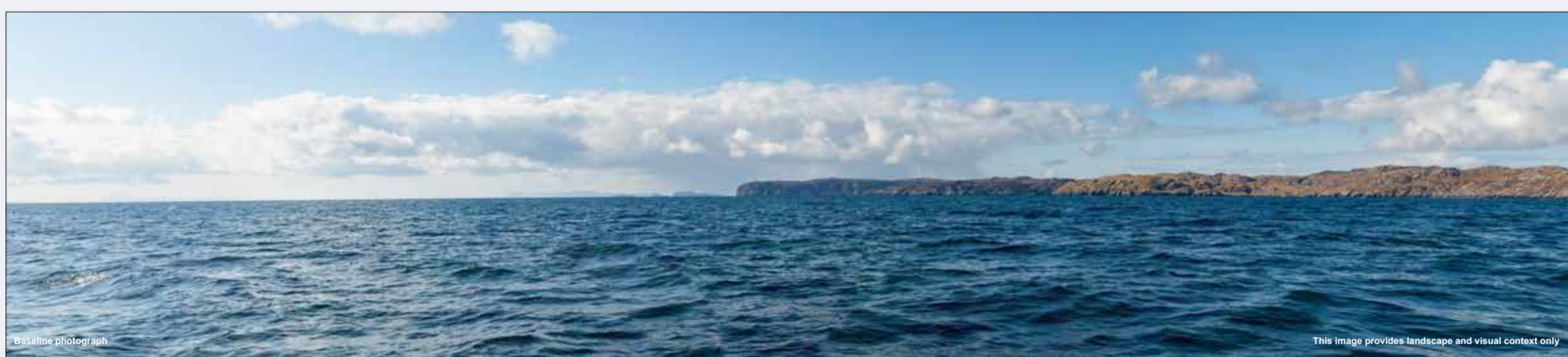
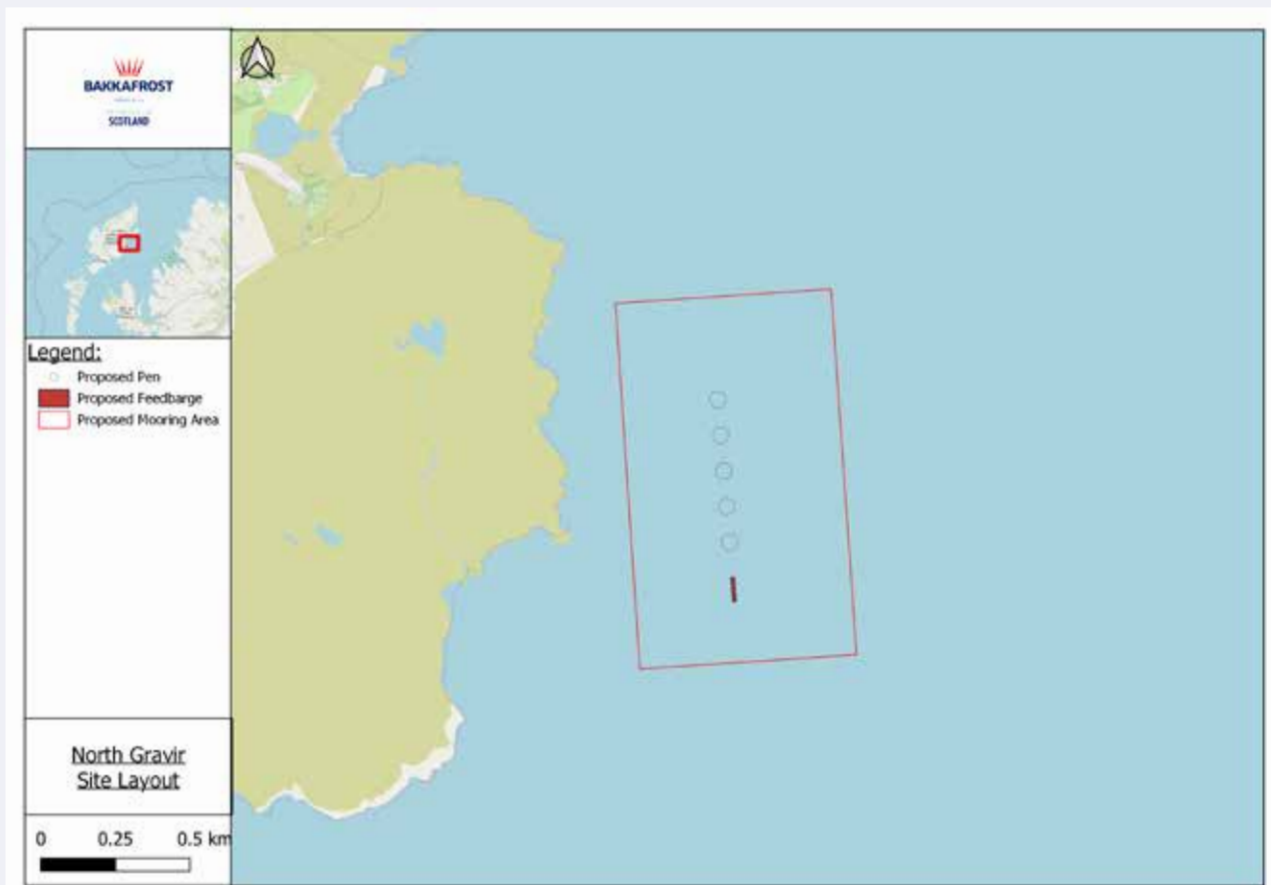


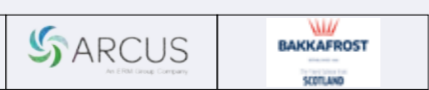
Figure 3.1
Viewpoint 3: Sea-based; North of Development
North Gravir Fish Farm



OS reference: 144213 E 920597 N
 AOD: 2.6 m
 Direction of view: 194° S
 Distance to development: 4.7 km
 Horizontal field of view: 80° (stair projection)
 Principal distance: 812.5 mm
 Paper size: A1 x 297 mm (half A1)
 Correct printed image size: 830 x 182 mm
 Camera: Nikon D3
 Lens: 50mm
 Camera height: 1.5 m AGL
 Date and time: 25/04/2023 09:36



Figure 3.3
Viewpoint 3: Sea-based; North of Development
North Gravir Fish Farm



OS reference: 144213 E 920597 N
 AOD: 2.6 m
 Direction of view: 194° S
 Distance to development: 4.7 km
 Horizontal field of view: 51.3° (stair projection)
 Principal distance: 812.5 mm
 Paper size: A1 x 297 mm (half A1)
 Correct printed image size: 830 x 182 mm
 Camera: Nikon D3
 Lens: 50mm
 Camera height: 1.5 m AGL
 Date and time: 25/04/2023 09:36





ECONOMIC BENEFIT

We are committed to creating shared value in the rural communities in which we live and work.

People

Committed to creating and retaining value and long term employment in our communities.

Under the Proposed Development...

6

New full time jobs created

Permanent, year round employment

6

At the existing fish farm at **Gravir**



Community charter

Our Community Charter pledges our commitment to our people, suppliers and communities.



Suppliers



Committed to sourcing locally

where possible



Over £8m total proposed investment in the development

£4m+

OPEX spend across 100+ suppliers in the Western Isles in 2021 and 2022

£2m+

CAPEX spend across 100+ suppliers in the Western Isles in 2021 and 2022

£90m

spend across 636 Scottish based suppliers 2022



ECONOMIC BENEFIT

Committed to being an active and integral part of our communities.

Community fund

Offering grants of up to £10,000 for local groups, causes and projects which focus on creating a stronger community by promoting health and wellbeing, stewardship of the natural environment or economic development.

Over
120
local community causes
supported since 2017

Supported projects



Find out more

Find out more about our Community Fund and how you can apply by visiting bakkafrostscotland.com/communityfund or scan the QR code.



Community Fund





THE PLANNING PROCESS

Proposed Development

The Proposed Development will have a surface area of 1.68 ha, meaning that under the 'Town and Country Planning (Hierarchy of Development) (Scotland) Regulations 2009' the Proposed Development is defined as 'Local Development'.

Under Schedule 2 of the 'Town and Country Planning (Environmental Impact Assessment) (Scotland) Regulations 2017', the Proposed Development is required to undergo full Environmental Impact Assessment (EIA).

THERE ARE 5 KEY STAGES TO THE EIA PROCESS

1.	2.	3.	4.	5.
Screening and scoping (complete)	Preparation of the EIA report (current phase)	Application Submission	Decision making	Post-decision actions

Timeline and next steps

**April
2022**

Pre-application discussions started with local stakeholders

**June
2022**

Screening and scoping request submitted to Comhairle nan Eilean Siar

**June
2022**

Screening Opinion issued by Comhairle nan Eilean Siar

**November
2022**

Scoping Opinion issued by Comhairle nan Eilean Siar

**July
2023**

Proposed submission date of application



COMHAIRLE NAN EILEAN SIAR SCOPING OPINION

KEY ASPECTS REQUIRING FURTHER ASSESSMENT

<p>Landscape and visual</p> <p>The fit and scale of the North Gravir development needs to be assessed against the character of the adjacent coastline. Impacts on the Wild Land area to the west and south should be carefully considered in the LVIA.</p>	<p>Nature conservation</p> <p>An assessment should be made of potential impacts on;</p> <ul style="list-style-type: none">• Benthic habitats and species (including Priority Marine Features);• Wild salmonid populations;• The Inner Hebrides and the Minches SAC;• SPAs with breeding northern gannet.
<p>Wild Salmonids</p> <p>The assessment should identify the risk posed to wild fish species from escapes, disease and sea lice. An Environmental Management Plan (EMP) should be submitted outlining how potential interactions with wild salmonids will be assessed.</p>	<p>Operational measures</p> <p>Details of stocking, fallowing, working procedures and practices and contingencies should be provided to demonstrate how effects upon the receiving environment will be minimised.</p>
<p>Economic considerations</p> <p>The assessment should identify direct and indirect benefits associated with procurement, construction and operation of the Proposed Development including consequences for the viability of the business and the maintenance of employment and the creation of new job opportunities including displacement of inshore fishery activity.</p>	<p>Navigation, Anchorage, Commercial Fisheries and other Non-Recreational Maritime Uses</p> <p>The assessment should consider potential conflict with established marine users and should detail the outcome of consultation with representative bodies.</p>
<p>Waste management</p> <p>The Comhairle state that non-fish waste can be scoped out due to BFS holding ISO 14001 certification. However, the Comhairle request a specific Waste Management Plan that details the arrangements for fish waste management.</p>	<p>Harbour and shorebase use</p> <p>Further details on proposed options for shorebase development at Gravir should be provided, including ensuring adequate access to the pier and public road for other users.</p>



YOUR OPINION

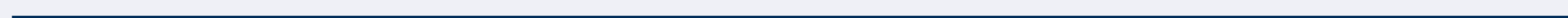
We value your feedback



We are committed to engaging with and listening to you during the process and would encourage you to discuss our proposals with us and provide feedback.

Please speak to a member of the team or you can get in touch with us by emailing: communities@bakkafrost.com or visit bakkafrostscotland.com

The opportunity to provide formal feedback to Comhairle nan Eilean Siar on the Proposed Development will be available after the application has been submitted.





NATURE CONSERVATION

Potential impacts on benthic habitats and species

KEY ASPECTS

Drop Down Camera (DDC) and grab sample surveys have been completed to assess the benthic environment.

Detailed benthic habitat maps of the development location have been prepared.

The following habitats have been identified as being of conservation interest:

- Priority Marine Features: Seapens, including *F. quadrangularis*, and burrowing megafauna in undisturbed circalittoral fine mud (A5.3611) and *Caryophyllia smithii* and *Swiftia pallida* on circalittoral rock (A4.211)

The potential impacts of the Proposed Development on these habitats as well as the general benthic environment will be assessed in the EIA to determine the significance of the effect in relation to the EIA regulations.

Potential impacts on the northern gannet SPAs.

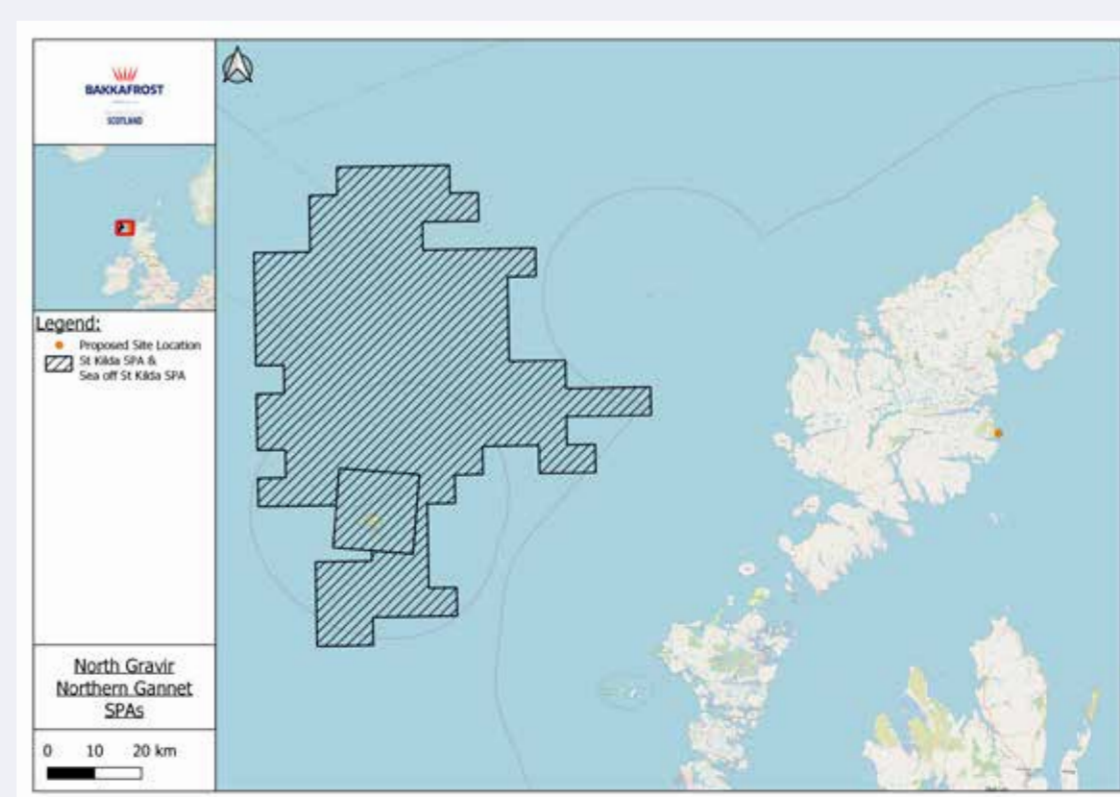
KEY ASPECTS

We have determined the potential for connectivity between the Proposed Development and northern gannet SPAs through analysis of mean foraging range data.

Potential connectivity exists through the potential for entanglement and entrapment in the proposed pole-mounted top net system.

The proposed pole-mounted top net system will align with best practice guidance provided by NatureScot.

These interactions will be fully assessed and any mitigation deemed necessary detailed in the EIA report.





NATURE CONSERVATION

Potential impacts on wild salmonid populations

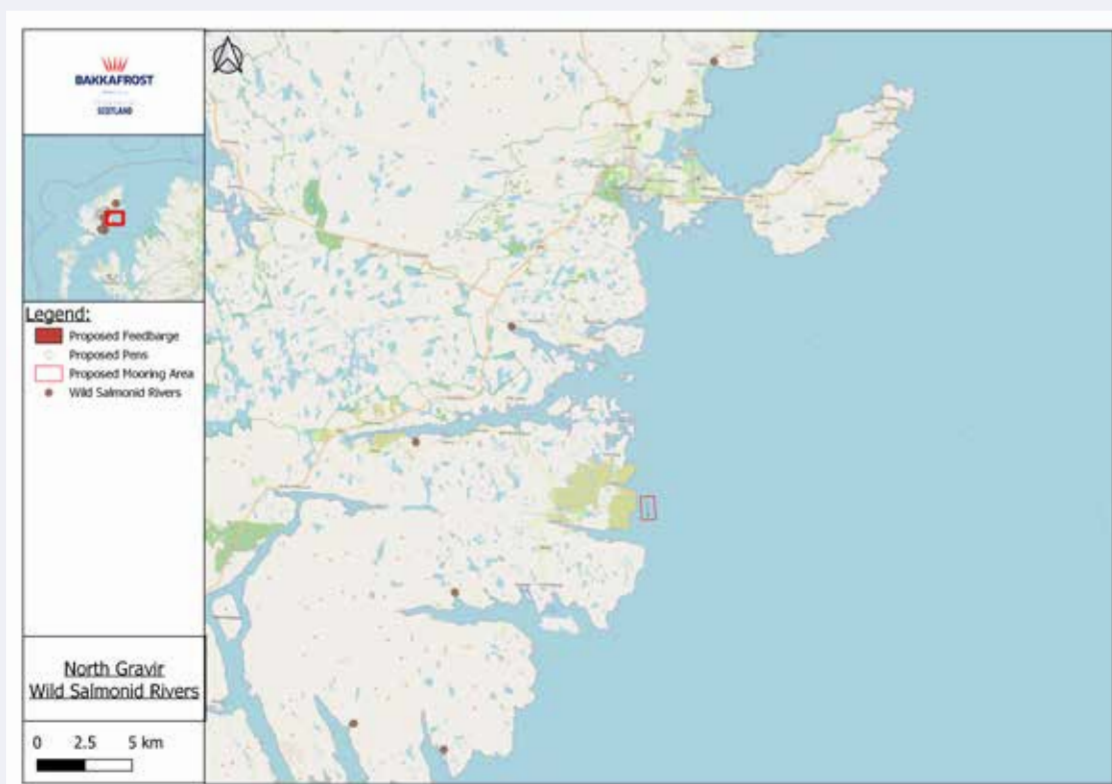
KEY ASPECTS

We have consulted with the Western Isles District Salmon Fisheries Board to inform our understanding of the wild salmonid populations in the wider area.

Detailed sea lice dispersal modelling will be undertaken for the Proposed Development to assess potential effects.

The Proposed Development may interact with local wild salmonids through; potential for sea lice transfer, potential for disease transfer and potential for genetic introgression.

These interactions will be fully assessed and any mitigation deemed necessary detailed in the EIA Report.



Potential impacts on the Inner Hebrides and the Minches SAC

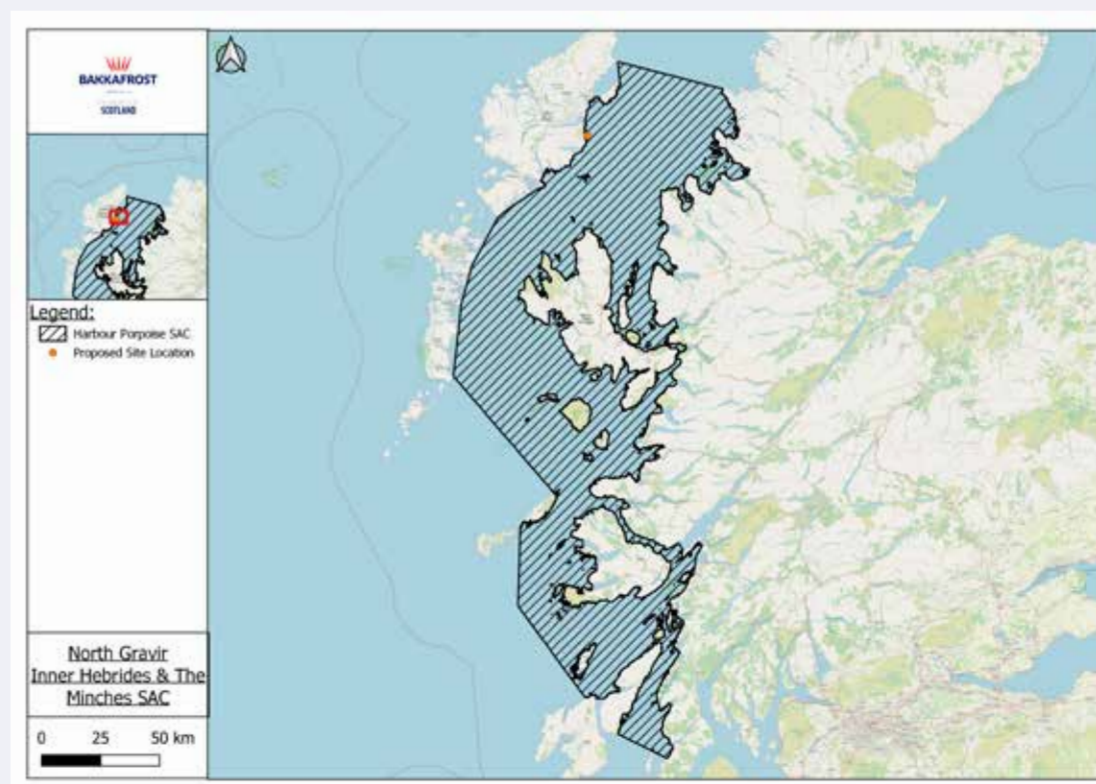
KEY ASPECTS

We have developed an understanding of the baseline environment and of harbour porpoise utilisation of the immediate and wider marine environment.

Acoustic Deterrent Devices (ADDs) will not be deployed as standard practice at the Proposed Development. Instead, the site will use proactive, passive predator control measures.

The Proposed Development may interact with harbour porpoise through; marine vessel activity, underwater noise and entanglement.

These interactions will be fully assessed and any mitigation deemed necessary detailed in the EIA Report.





OTHER MARINE USERS & ECONOMIC CONSIDERATIONS

Interactions with other marine users

KEY ASPECTS

We have identified the marine industries that have potential connectivity with the Proposed Development.

We have undertaken thorough pre-application consultation with the identified marine industries and representative bodies to ensure that their interests are considered.

The Proposed Development has been designed and located to avoid and reduce potential interactions, wherever possible, based on available data.

The potential interactions will be fully assessed and any mitigation deemed necessary detailed in the EIA Report.

Potential impacts on socio-economic receptors

KEY ASPECTS

We have determined the baseline socio-economic condition of the region.

We have undertaken an analysis to understand the direct, indirect, and induced Gross Value Added (GVA) economic contribution that the Proposed Development would generate.

We have also undertaken an analysis to determine the contribution the Proposed Development would make to direct, indirect and induced employment.

These interactions will be fully detailed and assessed and any mitigation deemed necessary detailed in the EIA Report.



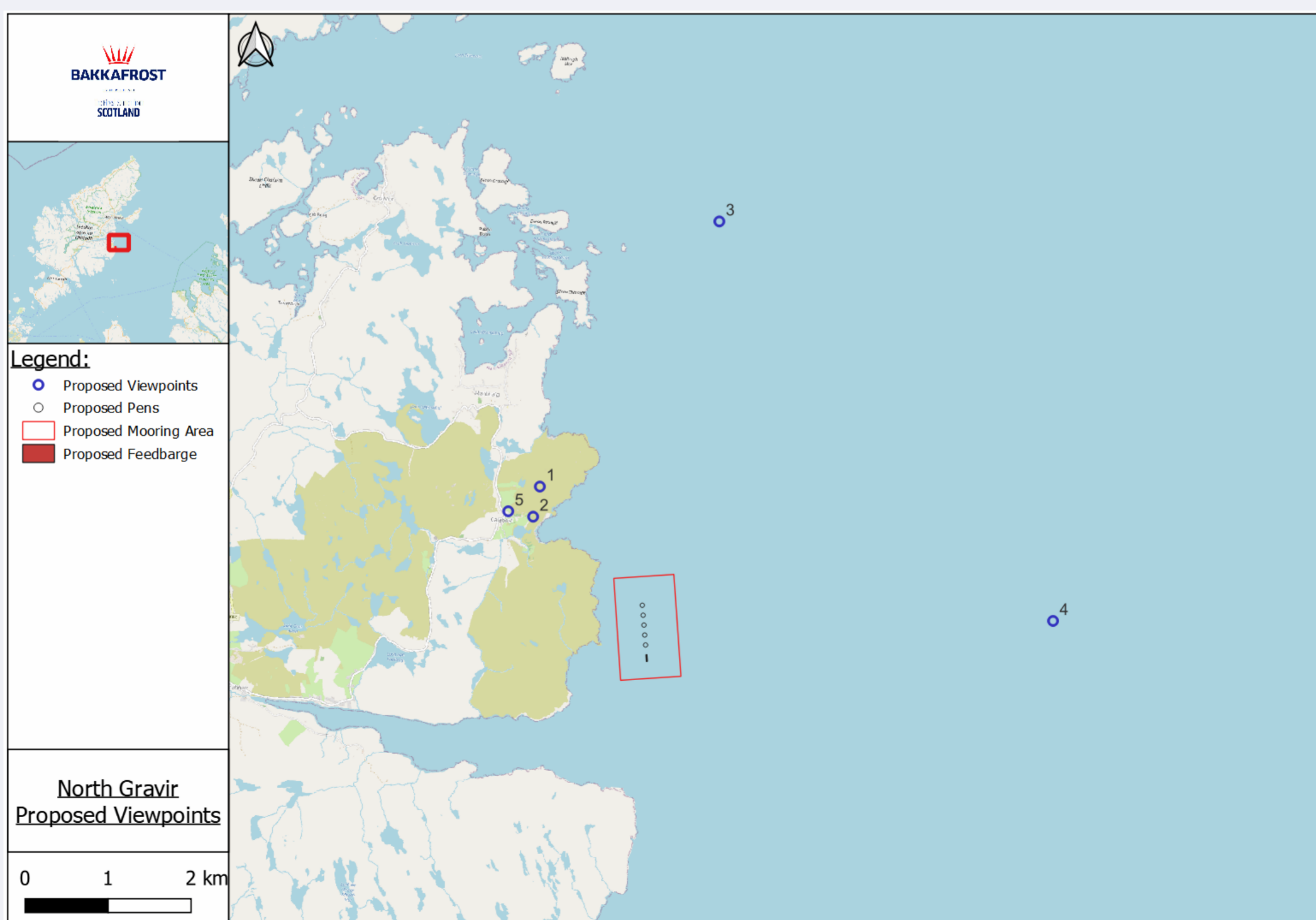
LANDSCAPE & VISUAL ASSESSMENT

KEY ASPECTS

Specialist, independent consultancy are undertaking a full Seascape, Landscape Visual Impact Assessment (SLVIA). Part of this assessment includes preparation of photomontages from selected viewpoints.

Viewpoints have been selected base on the Zone of Theoretical Visibility (ZTV) and consultation with Comhairle nan Eilean Siar and NatureScot.

The detailed findings of this assessment will be submitted in support of the planning application. The assessment will determine the significance of any effects.





WASTE MANAGEMENT

Waste management

KEY ASPECTS

We have reviewed our current fish waste management strategy and provided full detail in support of the EIA Report.

We have developed a site specific Fish Mortality Plan for the Proposed Development that outlines the mortality removal procedures that will be implemented during normal operational circumstances and also during event mortality.

As part of the review of our fish waste management strategy for the Proposed Development, we have detailed the SEPA licensed waste disposal sites that we use.

A full assessment of the potential for significant effects as a result of fish waste has been undertaken within the EIA Report, mitigation, where needed, has also been detailed.



OTHER AREAS OF ASSESSMENT

The following areas have also been considered within the Environmental Impact Assessment Report

KEY ASPECTS	
Consideration of alternatives and site selection	Impacts upon marine and terrestrial cultural heritage
Traffic and transport	Impacts on and resilience to climate change
Vulnerability to disasters and major accidents	Species and habitats of conservation importance
Impacts upon population and human health	Noise

